



Melanoma multiomics under the magnifying glass of the Regina Elena and San Gallicano Institutes

Gennaro Ciliberto¹, Barbara Bellei², Giulia Bon¹, Carlo Cota², Simona D'Aguanno¹, Donatella Del Bufalo¹, Marta Di Martile¹, Simona Di Martino¹, Cristiana Ercolani¹, Italia Falcone¹, Luigi Fattore¹, Virginia Ferraresi¹, Pasquale Frascione², Enzo Gallo¹, Patrizio Giacomini¹, Antonino Guerrisi², Valentina Laquintana¹, Rossella Loria¹, Chiara Mandoj¹, Elisa Melucci¹, Emilia Migliano², Piera Rizzolo², Michelangelo Russillo¹, Fabio Valenti¹, Giovanna Ziccheddu¹, & Aldo Morrone²

IRCCS Istituto Nazionale Tumori Regina Elena¹; IRCCS Istituto Dermatologico San Gallicano²

Background: Quite unusual in Italy, the twin Regina Elena (IRE) and San Gallicano (ISG) Institutes encompass the whole range of expertise from early dermatological diagnosis, to surgery and medical therapy, involving disciplines as diverse as radiomics, genomics, epigenetics and cellular/molecular biology.

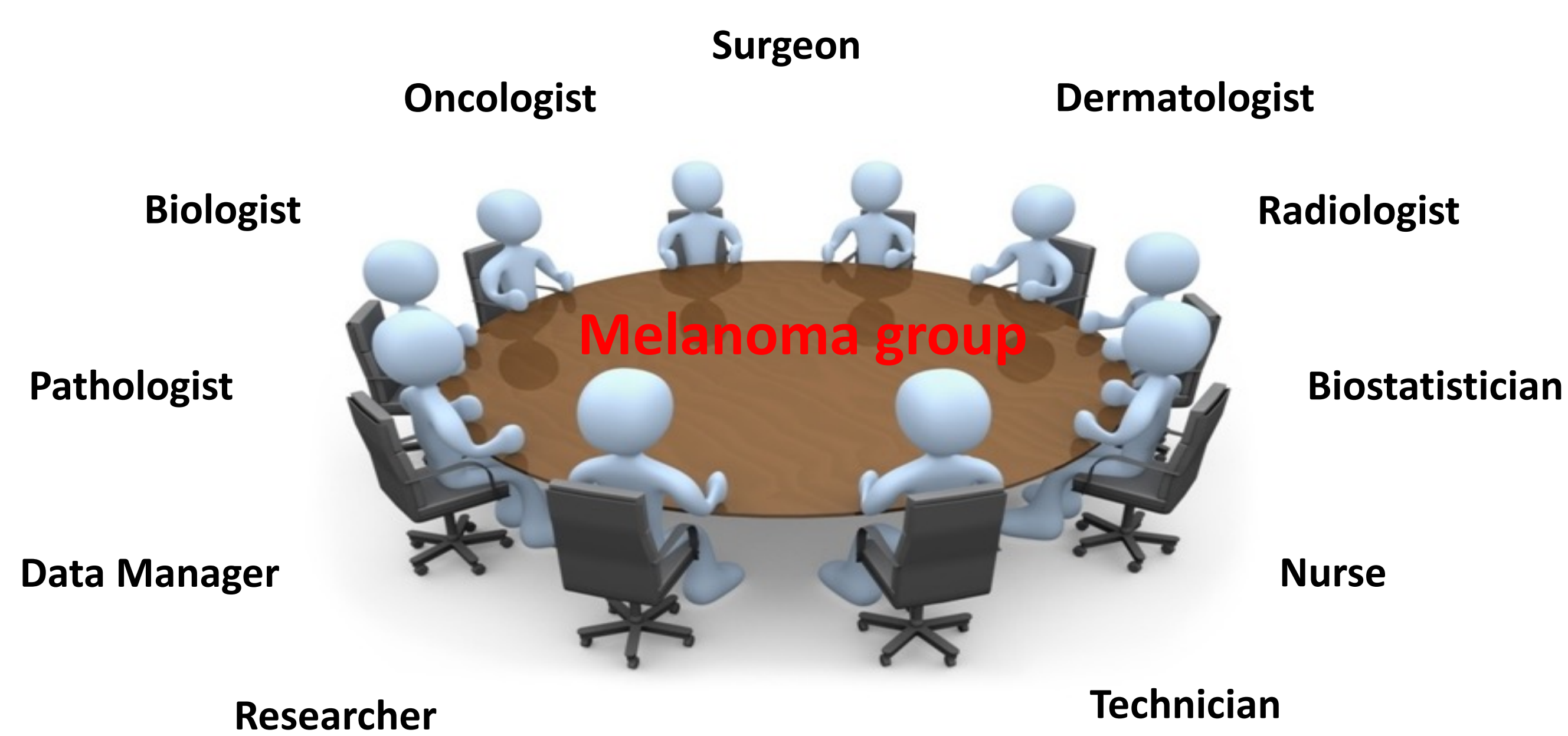
Methods: IRE and ISG have implemented a patchwork of active multidisciplinary groups that glue clinics and research together through the Melanoma 4P (Precision, Personalized, Predictive, Participated) project. It acts as a backbone, providing systematic recruitment/distribution of clinical materials (>700 tissue and liquid biopsies biobanked in 4 years from 258 patients) and associated data, and sets the stage for multi-analyte (RNA, miRNA, DNA, and proteins) monitoring throughout disease course.

Results: With a major focus on understanding pharmacological resistance and develop innovative therapies, our results indicate:

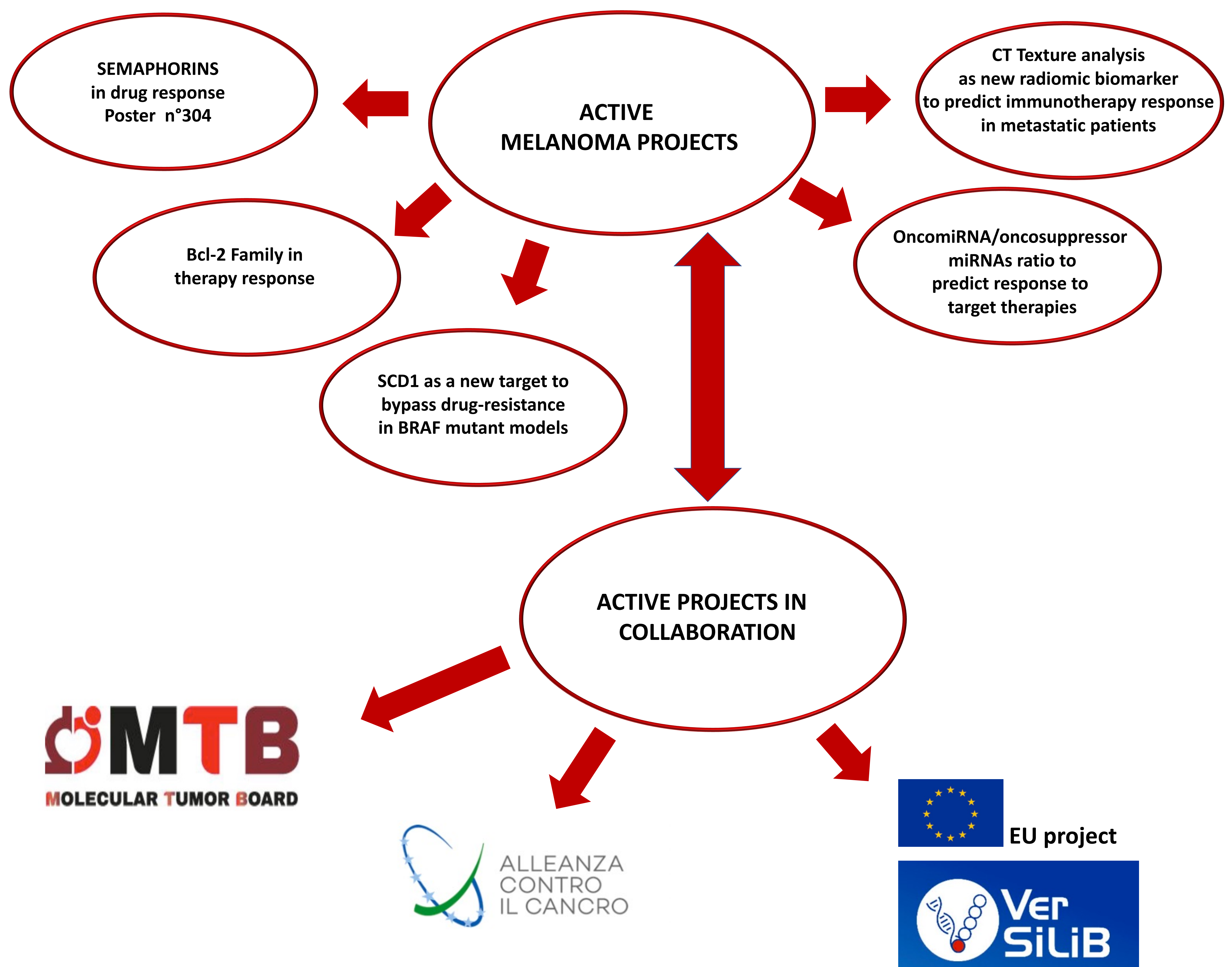
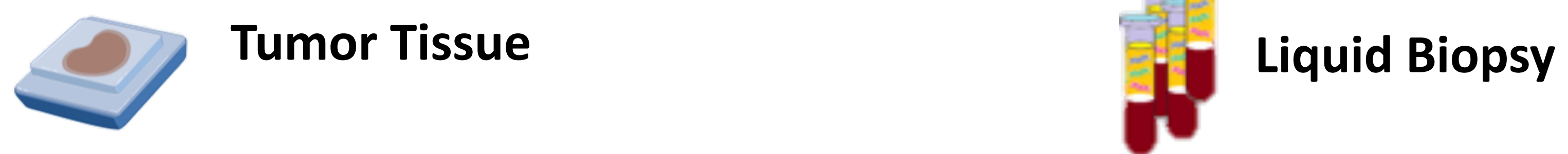
- Inhibiting semaphorin 6A reverts resistance to target therapy;
- In melanoma stem cells, characterized by altered lipid metabolism, SCD1 inhibition restores the response to targeted therapies, e.g. BRAF/MEK inhibitors;
- OncomiRNA/oncosuppressor miRNAs ratio predicts response to target therapies and is the subject of novel predictive metrics and patents;
- Higher level of Semaphorin 5A and 7A transcript has been detected in patients with advanced melanoma;
- Bcl-2 family protein expression affects therapy response.

Moreover:

- Original approaches of Computerized Tomography (CT) Texture Analysis are being implemented to extract quantitative imaging features, particularly relevant to understanding tumor microenvironment and response to immune checkpoint blockade;
- Organoids are being established in the context of an Alliance Against Cancer collaborative network;
- As to advanced molecular diagnosis, special emphasis has been given to nanophotonic liquid biopsy (Versilib EU project) and actionable molecular alterations not yet approved by regulatory bodies (e.g. OncoKB level 3A/B) in collaboration with our institutional Molecular Tumor Board (MTB).



MELANOMA 4P: IRE/ISG PROTOCOL FOR RECRUITMENT AND BIOBANKING OF CLINICAL MATERIALS



Conclusions

IRE and ISG outline a novel comprehensive strategy for comprehensive melanoma management and understanding.